

Max Razdow  
Portfolio of Selected Recent Work



Family, 73" x 56", ink, acrylic, collage, toner, colored pencil on paper, 2018



Galaxy, 73" x 56", ink, acrylic, collage, toner, colored pencil on paper, 2018





Nocturn 5.5" x 7.5", oil, acrylic and ink on panel, in artist's frame, 2018





Mountain (Night), 5" x 7", Oil, acrylic and ink on panel, in artist's frame, 2018



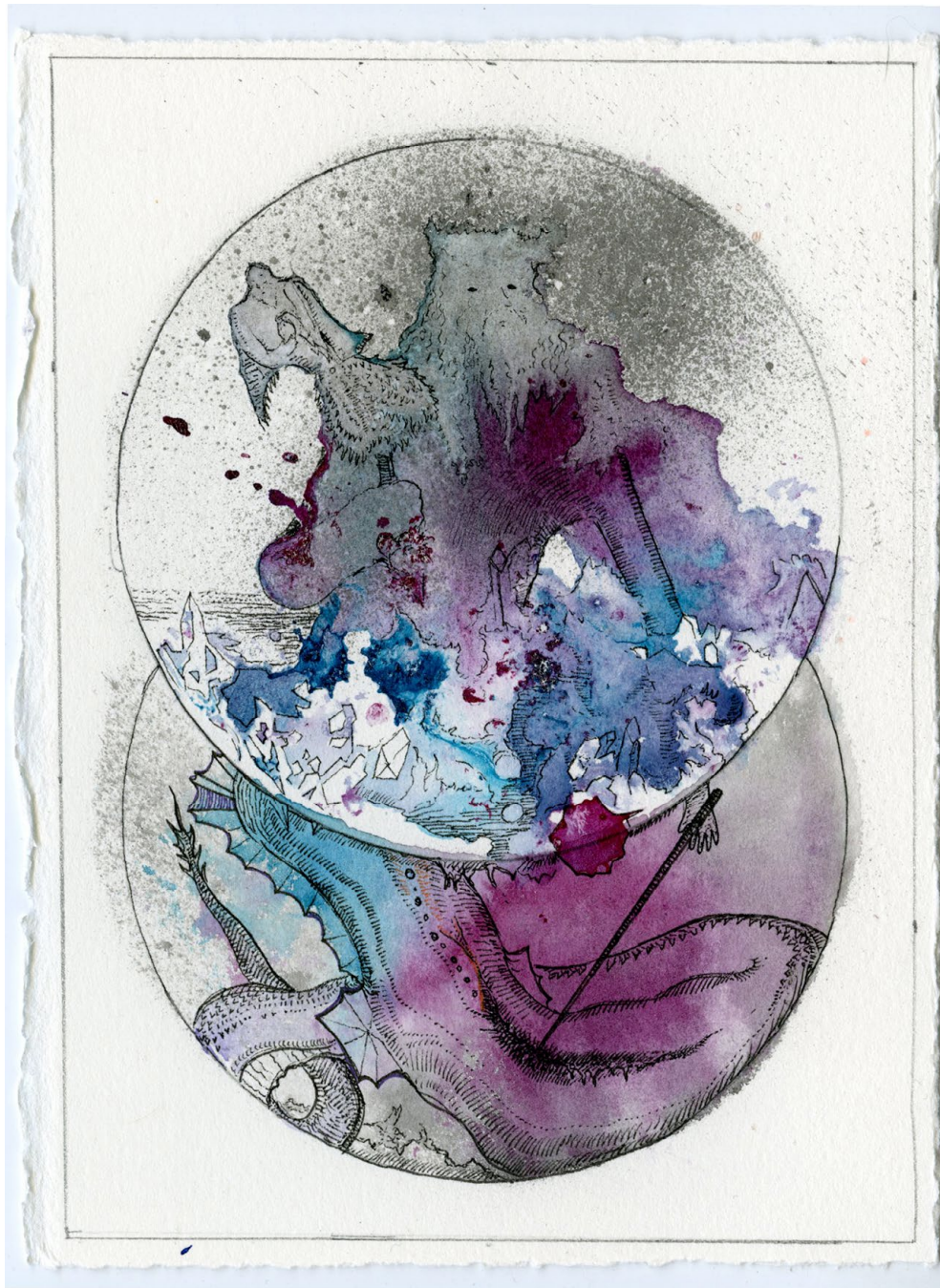
Dryad, 5" x 7", Oil, acrylic and ink on panel, in artist's frame, 2018





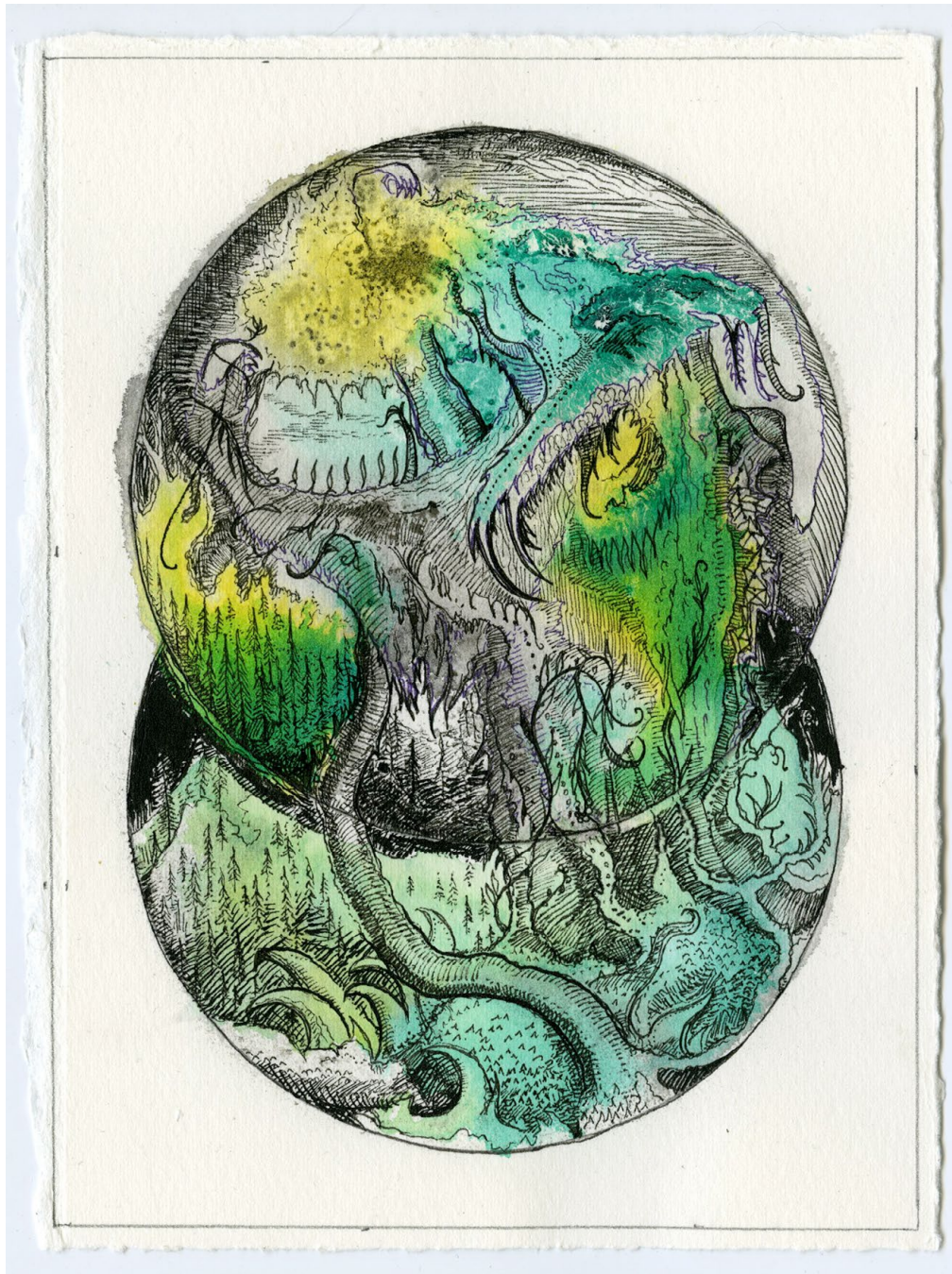
Head of Orpheus, 5" x 7", Oil, acrylic and ink on panel, in artist's frame, 2018





Sea-ice God, 5.5" x 7.5", pen, ink, pencil on paper, 2018





Verdant God, 5.5" x 7.5", pen, ink, pencil on paper, 2018





Metropolis, 175" x 80" [4.4 x 2 M], Pen, ink, gesso, acrylic, colored pencil on paper (4 sheets) in artist's frame, 2017.





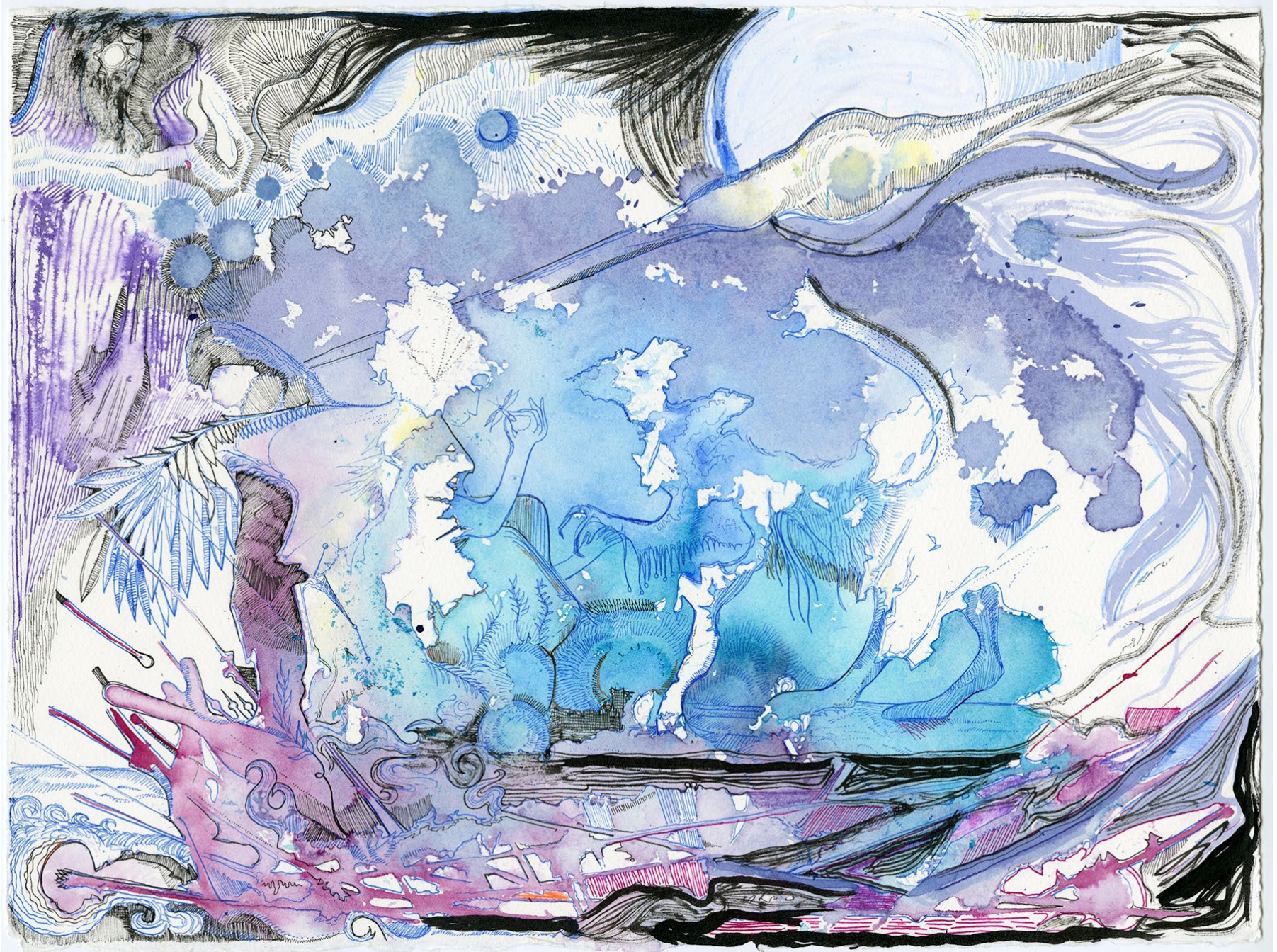
The Northern Breach, 30" x 40", pen, ink, gesso, colored pencil on paper, 2016





Below The Dome, 30" x 40", pen, ink, pencil on paper, 2016





Alala and the Chimera, 11" x 15", pen, ink on paper, 2016





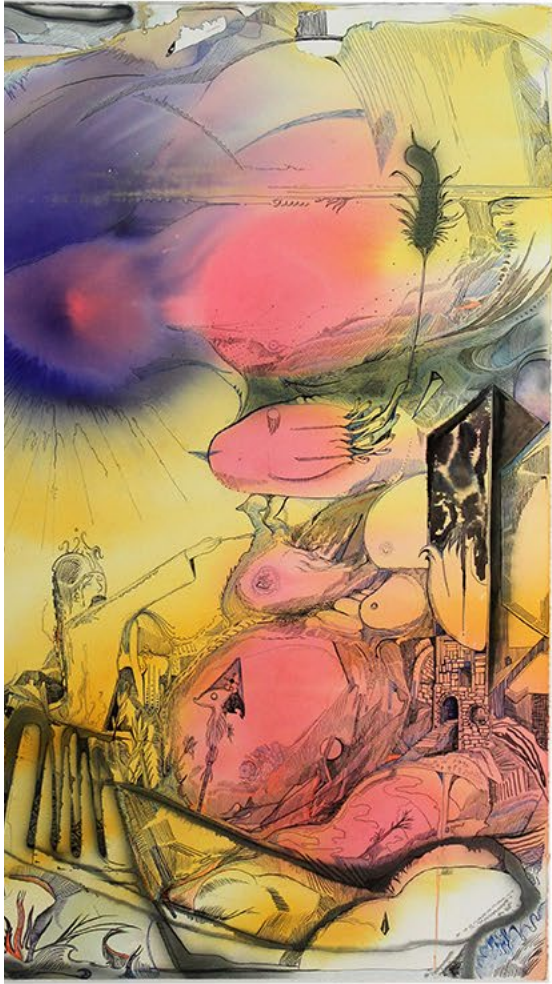
Foundling Age Witch, 15" x 23", pen, ink on paper, 2015





Foundling Age Engineer, 11" x 15", pen, ink on paper, 2017





Tidepool Triptych, pen and ink on paper, 70" x 30", 2015





Dragon's Coil, 30" x 46", pen, ink on paper, 2015





Dragon Plus Rhizome Plus Star, 72" x 60", acrylic on canvas with gromets, 2015





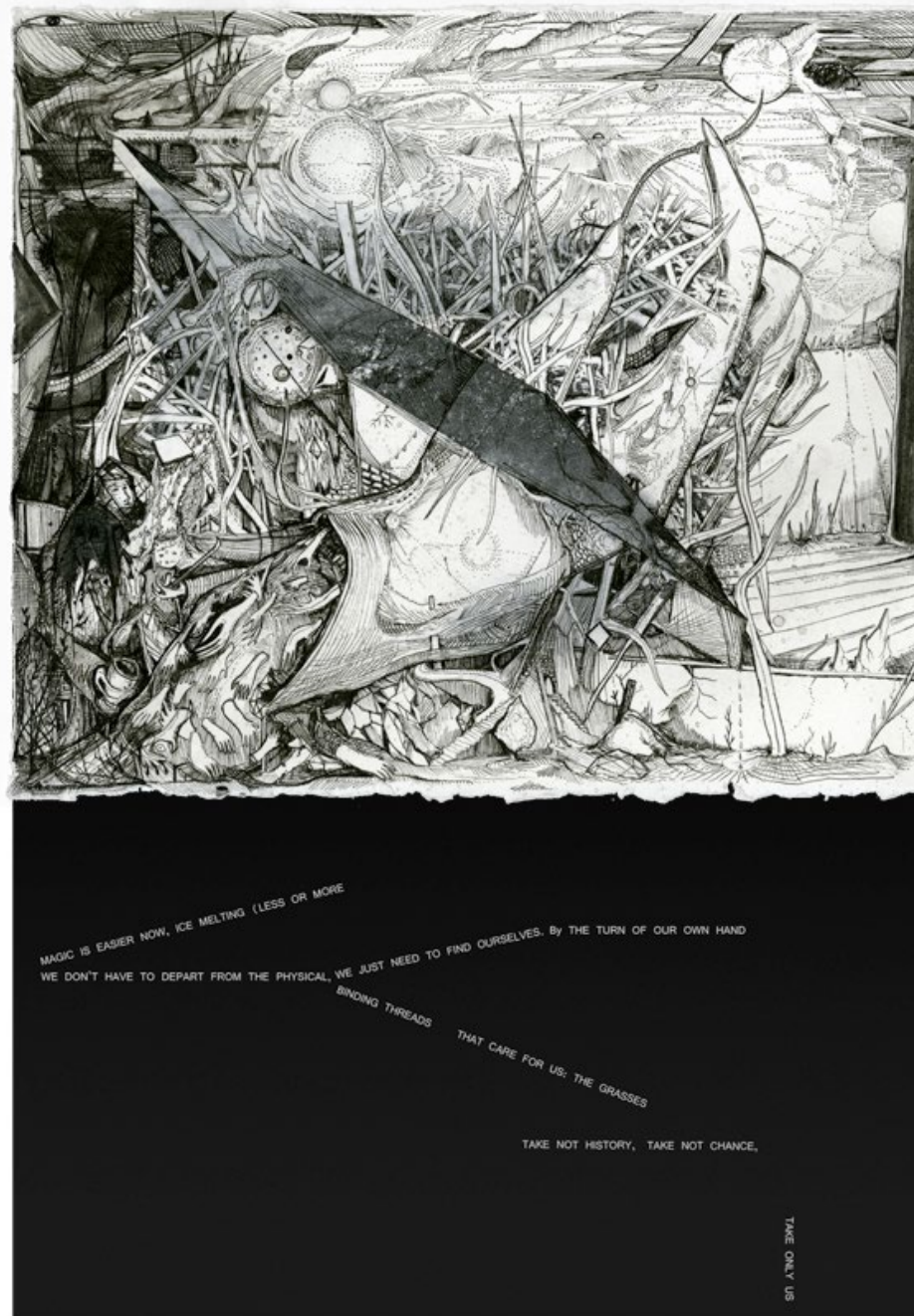
The Rift, 30' x 6'7", Pen, ink, gesso, acrylic, tempera, sand, ink jet elements on joined paper, 2014





Untitled, 72" x 84", oil and acrylic on panel, 2012





Magic is Easier Now, 7.5" x 9.5" pen, ink, xerox transfer on paper, inkjet print, 2014